



Donaldson[®]
FILTRATION SOLUTIONS

CARTRIDGE FILTERS



ULTRA-WEB® CARTRIDGE FILTERS HAVE NO EQUAL

Donaldson® Torit® filters keep dust collectors operating at peak performance. Offered for a full range of dust, fume and mist collection applications, Donaldson Torit filters—especially our proprietary Ultra-Web® filters—outperform and outlast other filters. When it comes to Ultra-Web filters, there is no equal in performance and value.

All filters are not alike. Equip a dust collector with a generic replacement filter and expect the performance of that collection system to decline. What's worse, generic replacement filters selected for their initial lower purchase price often waste manufacturers' time, productivity and money in the long run.

Donaldson Torit Cartridge Filters Offer:

- **Higher performance**
- **Increased efficiency**
- **Longer filter life**
- **Greater value**



**DOWNFLO® OVAL
DUST COLLECTOR**



**DOWNFLO® WORKSTATION
DUST COLLECTOR**



**WSO
MIST COLLECTOR**

THE VALUE OF ULTRA-WEB CARTRIDGE FILTERS

Don't be fooled by the initial lower purchase price of cartridge filters. Using generic brand filters can be an expensive proposition. Conventional cartridge filters don't last as long and must be replaced more often than Donaldson Torit filters. And that means buying and replacing more filters, more often— which costs more over time.

There is no comparison to Ultra-Web filters when it comes to quality and cost. Ultra-Web filters offer dramatic savings compared to generic cellulose and cellulose/synthetic fibre blend filters.

TRUE COST OF REPLACEMENT FILTERS

Comparison Factors Over 30 Month Period	Generic Cellulose	Generic Cellulose/ Synthetic Fibre Blend	Ultra-Web®
Purchase price per cartridge	\$80	\$93	\$124
Filter life	8 months	9 months	12 months
Number of filter changes	3	3	2
Total purchase cost for filters	\$3,840	\$4,464	\$3,968
Disposal cost = \$50 per drum Total disposal cost for 16 filters after 30 months	\$2,400	\$2,400	\$1,600
Changeout cost (do-it-yourself) Total changeout cost for filters	\$450	\$450	\$300
Total investment	\$6,690	\$7,314	\$5,868

TOTAL SAVINGS WITH ULTRA-WEB FILTERS

Ultra-Web Filter Costs Compared With Generic Filter Costs	Ultra-Web®
Generic cellulose total investment	\$6,690
Ultra-Web total investment	\$5,868
Ultra-Web Savings	\$822
Generic cellulose/synthetic fibre blend total investment	\$7,314
Ultra-Web total investment	\$5,868
Ultra-Web savings	\$1,446

This application example is based on a DFT 2-16 dust collection system and very fine, dry dust (submicron particles). Cartridge changeout takes 1 hour.

FILTER OPTIONS






	 Ultra-Web®	 Ultra-Web SB	 Fibra-Web®	 Torit-Text™	
Base Media	Cellulose with Nanofibre ¹	Spunbond polyester with Nanofibre ¹	Synthetic with Nanofibre ¹	Calendered, Spunbond polyester with Tetratex® PTFE membrane ²	
Maximum Operating Temperature	82°C (180°F)	82°C (180°F)	82°C (180°F)	93°C (200°F)	
Abrasion Resistance	Good	Excellent	Good	Excellent	
Chemical Tolerance	Fair	Excellent	Good	Excellent	
Optional Flame Retardant Media (FR)	Yes	No	Yes	No	
Special Characteristics	Nanofibre media provides excellent surface loading and dust release capabilities.	Highest efficiency similar to membrane products at a much lower price.	Wide pleat spacing provides thorough pulse cleaning of fibrous and agglomerative particles.	Wide pleat spacing and smooth, hydrophobic, state-of-the-art PTFE membrane provides excellent particle release.	
Markets	Metalising, Pharmaceutical, General industrial, Paint pigments, Carbon black, Thermal spray, Welding	Chemical processing, General industrial, Surface blasting, Grinding, Polishing, Powder coating, Pharmaceutical, Food	Composite Grinding, Food processing, Grain handling, Metal buffing, Pharmaceutical, Textiles, Woodworking	Chemical processing, Food processing, General industrial	
Applications	Premium performance on ambient, extremely fine and non-fibrous dust and some abrasive dust. High filtration efficiency on very fine particulate of <1 micron	Chemical processing, General industrial, Surface blasting, Grinding, Polishing, Powder coating	Excellent performance on combination fibrous and non-fibrous dust, and/or agglomerative dust	Highly recommended for chemical, food, and industrial processing when product contamination must be minimised. Excellent performance on moist, hygroscopic, or agglomerative dust.	
Dust Types	Fumed silica, Metallic fume, Metallurgical powders, Oily weld fume, Pharmaceutical compounds	Ceramics, Cotton, Fibreglass, Tobacco, Metal grinding, Powder coating, Shot blast, Gypsum, Lime, Cement	Ceramics, Cotton, Fibreglass, Tobacco	Dextrose, Flour, Starch, Sugar, Whey	
Available for Collectors (see key at far right)	AAT; AER; AT; AT-3000; CF; CX; DB; DCS; DFO; DF; DFT; DWS; ECB; ET; MTD; PB; PT; SDF; T-2000; TBV; TD; WB	AER; AT; CF; CX; DB; DF; DFT; ECB; MTD; PB; SDF; TBV; TD; TBV	AER; AT; CF; CX; DB; DCS; DF; DFO; DFT; DWS; ECB; MTD; PB; SDF; TBV; TD	AER; AT; CF; CX; DB; DCS; DF; DFO; DFT; DWS; ECB; MTD; PB; SDF; TBV; TD	

Donaldson Torit cartridge filters are available for all other brands of cartridge collectors (see listing on page 5).

COLOR CHART

Nanofibre Filters	Specialised Filters	Standard Filters
-------------------	---------------------	------------------

FILTER OPTIONS

 <p>Torit-TEX CD™</p>	 <p>Torit-TEX HCD™</p>	 <p>High Temp</p>	 <p>Thermo-Tek®</p>	 <p>Dryflo®</p>
Carbon impregnated, Calendered, Spunbond polyester with Tetratex® PTFE membrane ²	Carbon impregnated Calendered, Spunbond polyester with Tetratex® PTFE membrane ²	Synthetic	Synthetic	Synthetic
93°C (200°F)	135°C (275°F)	177°C (350°F)	135°C (275°F)	65°C (150°F)
Excellent	Excellent	Excellent	Good	NA
Excellent	Excellent	Good	Good	Fair
No	No	No	No	No
Conductive media with certified resistivity level of 10 OHM.	Conductive media with certified resistivity level of 10 OHM.	Special gaskets and adhesives assure structural integrity and airtight sealing characteristics.	Excellent chemical tolerance- stainless steel option only.	Prefilter coalesces smaller droplets into larger droplets.
Chemical processing, General industrial, Pharmaceutical, Pulp and paper	Chemical processing, General industrial, Pharmaceutical, Pulp and paper	Chemical processing, General industrial	Cement processing, Chemical processing, Metallurgical, Pharmaceutical	Metalworking
Higher temperature applications where electrostatic charges can be dangerous	Applications where electrostatic charges can be dangerous and with higher temperatures up to 275°F (135°C)	Metallurgical, Chemical and Industrial processes. Higher temperature applications up to 350°F (177°C)	Metallurgical, Chemical and Industrial applications. Higher temperature applications.	Wet machining
Coal, Plastics, Powdered materials, Prepared food	Coal, Plastics, Powdered materials, Prepared food	Cement, Coal/Coke, Ink, Paint pigment	Carbon, Cement, Foundry shakeout, Metal powders, Shot blast, Silica gel drying, Thermal spray	Water soluble, straight oils
DF; DFT	AER; DF; DFT; MTD; PB	AER, DCS; DF; DFT; DWS; ECB; MTD; PB; TBV; TD	DFO; DFT; ECB; TBV; TD	ADMC; DMC-MMA; MMB; DMC; C; D1-D10






Note: Optional stainless steel construction available on all cartridges.

¹ Nanofibre technology reduces initial penetration by as much as 90% versus conventional media by utilizing a unique layer of submicron fibres on the media's surface.

² Tetratex® PTFE membrane is comprised of millions of small, randomly connected fibres that create extremely small pore sizes to repel water while allowing air and moisture vapor to pass.

³ Minimum Efficiency Reporting Value of this cartridge has been determined through independent laboratory testing using ASHRAE 52.2 test standards.

FILTER OPTIONS

WSO	Vibra-Shake™	Ultra-Tek®	Endura-Tek™	Cellulex™
				
Polyester and Glass	Cellulose	Synthetic	Cellulose and Synthetic fibres	Cellulose
65°C (150°F)	65°C (150°F)	65°C (150°F)	82°C (180°F)	65°C (150°F)
NA	Good	Good	Good	Good
Good	Fair	Good	Fair	Fair
No	No	Yes	Yes	Yes
Proprietary bonding system stabilises pore structure for optimum performance.	Pre-filter wrap sieves larger particulate.	Proprietary blend of fibres and wide pleat spacing reduce pressure drop and increase airflow.	Delivers extended filter life over traditional untreated cellulose media.	Enhanced performance due to a unique combination of fibre sizes and a more uniform fibre distribution.
Metalworking	Grinding and polishing, Bag dumping	Composite grinding, Grain handling, Textiles, Woodworking	Humid climates	Superior to felts, fabrics, cotton cloths, and similar media
Metal Cutting, Grinding, Forming	Higher efficiency and easier maintenance for applications where envelope filters are typically used. Intermittent duty applications and machining	Applications with fibrous dusts of >10 micron particulate	Ambient, non-fibrous dust applications under humid conditions. Economical choice for operations with forced or cyclical filter replacement (independent of pressure drop)	Applications with dry, coarse particulate. Economical choice for operations with forced or cyclical filter replacement (independent of pressure drop)
Water soluble, straight oils and Oily smoke	Metal grinding, Carbon dust, Graphite dust	Ceramics, Composites, Fibreglass, Wood dust	Gypsum, Lime, Shot blast	Various
WSO-10; WSO-15; WSO-20; WSO-25	RVS; SP; VS	AER; AT; CX; DB; DCS; DF; DFO; DFT; DWS; ECB; MTD; PB; SDF; TBV; TD	AER; AT; CF; CX; DB; DF; DFT; ECB; MTD; PB; TD	AER; AT; CX; DB; DF; DFT; ECB; MTD; PB; TBV; TD

Collector Acronym	Collector Name	Collector Acronym	Collector Name	Collector Acronym	Collector Name
AAT	Ambient Air Tubesheet	DFT	Downflo II	SDF	Downflo SDF
ADMC	Advanced Dryflo® Mist Collector	DWS	Downflo WorkStation	SP	ShopPro™
AER	AerBooth™	DMC; C; D1-D10	Dryflo® Mist Collector	TBV	Torit® Bin Vent
AT	AerTable™	DMC-MMA; MMB	Dryflo Machine-Mountable	T-2000	Trunk 2000®
AT-3000	Ambient System	ECB	Environmental Control Booth	VS	Vibra Shake™
CF	CF Series	ET	Easy-Trunk®	WB	Weld Bench
CX	CX Series	MTD	MTD		
DB	Downdraft Bench	PB	ProBooth™		
DCS	Downflo® Containment System	PT	Porta-Trunk®		
DFO	Downflo Oval	RVS	Round Vibra Shake		

CARTRIDGE FILTER BREAKTHROUGHS

UNPARALLELED TECHNOLOGY

As the world leader in air filtration for nearly 100 years, Donaldson Company continually strives to engineer filters that outperform all others. Donaldson Company set the standard in cartridge filter technology with innovations like our proprietary nanofibre filter media.

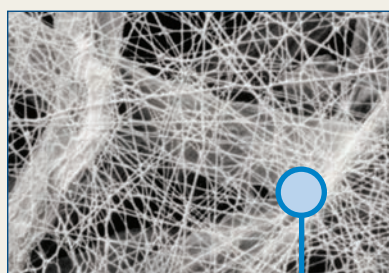
Nanofibre media is the most efficient and cost-effective choice available for most dust, fume and mist collection processes. Donaldson Torit offers a full range of high performance cartridges for almost any application.

EXPERIENCE THE NANOFIBRE ADVANTAGE

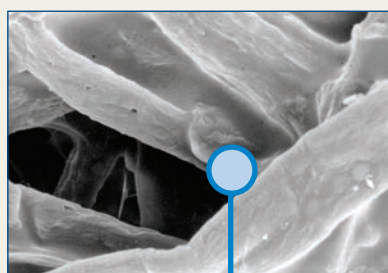
- Increased surface loading
- Captures submicron contaminants
- Enhances dust cake release
- Better cleaning efficiency
- Lower cost per cubic foot of air per minute (cfm)
- Lower energy cost

NANOFIBRE FILTER MEDIA

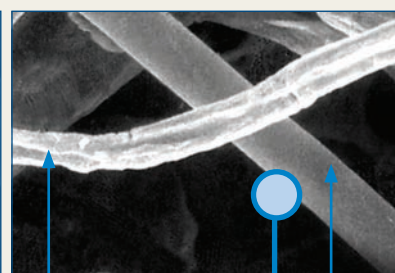
The distinguishing factor in our Ultra-Web®, Ultra-Web SB, and Fibra-Web® filters is nanofibre filtration technology. It uses a layer of fibres 0.2 to 0.3 microns in diameter to capture contaminants less than one micron in size. With nanofibre filters, dust particles rapidly accumulate on the filter surface to build a thin, permeable dust-stopping cake. As a result, Ultra-Web, Ultra-Web SB, and Fibra-Web filters offer the highest filtration efficiency by eliminating premature filter plugging and allowing the dust cake's release during the collector's cleaning cycle.



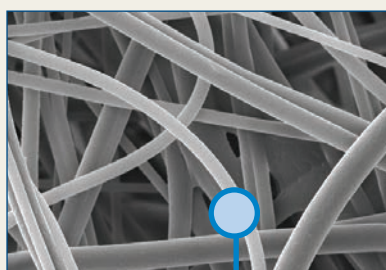
10 Micron
Nanofibre Technology (600x)



10 Micron
Cellulose Media (600x)



10 Micron
Cellulose/Synthetic
Media Blend (600x)



10 Micron
Meltblown Media (600x)



10 Micron
Spunbond Media (600x)

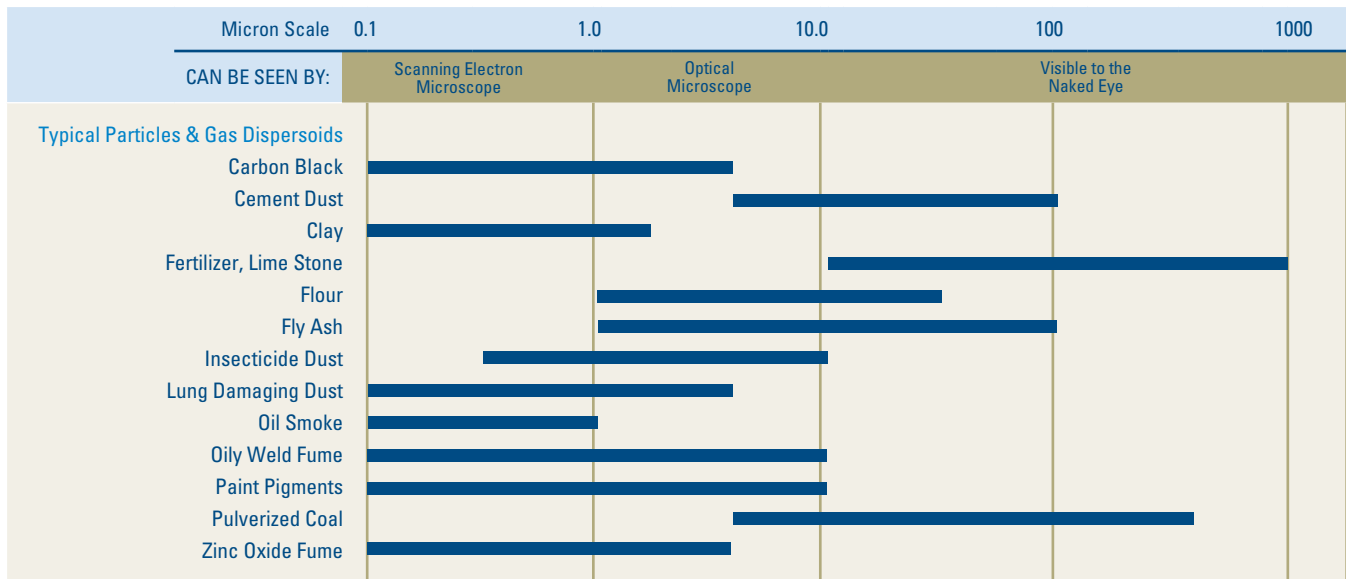
1 micron = 1/25,400 of an inch

OPERATING ADVANTAGES

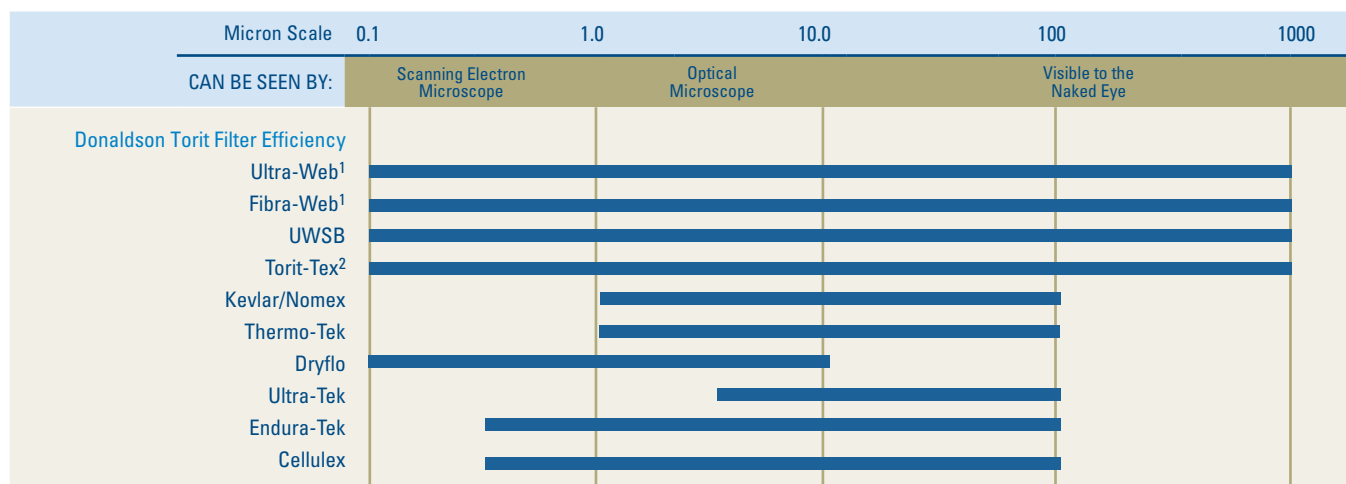
DONALDSON TORIT FILTERS PERFORM

We are the world leader in filtration solution science and technology. We cover a wide range of industrial air filtration applications with a variety of cartridge filter models that provide the highest levels of performance on all types of dust, fume and mist.

PARTICLE SIZE RANGE OF COMMON CONTAMINANTS



CARTRIDGE FILTERS OPTIMUM PERFORMANCE SCALE



¹ Ultra-Web and Fibra-Web cartridge filters use nanofibre technology to provide an initial filtration efficiency of up to 10 times greater than conventional media.

² Torit-Tex cartridge filters use Tetratex® PTFE membrane, which repels water while allowing air and moisture vapor to pass through the membrane's extremely small pores.

UNPARALLELED SERVICE & SUPPORT

HERE TO SERVE YOU

Providing technically advanced filters with the longest filtration life is just one of Donaldson Torit's distinctions. When it comes to customer support, no other filter manufacturer can match Donaldson Torit's technical expertise and commitment. Rely on Donaldson Torit to help you choose the best filters for your applications.

- **Full-Line Cartridge Filter Offering**

With hundreds of varieties to choose from, Donaldson Torit offers the broadest selection of cartridge filters for all popular makes and models of cartridge collectors.

- **Knowledgeable Support**

Donaldson Torit aftermarket sales representatives and parts specialists help customers select the best filters for their application needs.

- **Quick Delivery**

All in-stock Donaldson Torit made filters are shipped within 24 hours of order placement.

- **Product Support**

Donaldson Torit filters are stocked and distributed quickly through two strategically located Product Distribution Centers. With more than 612,000 square feet of warehouse space, our distribution centers ensure that our filters arrive promptly at their destinations.

- **Easy Access**

Call Donaldson Torit customer service at **1800 345 837** or visit us at www.donaldsonfilters.com.au and click on "Search Our Catalog."

ULTRA-WEB®

for cartridge collectors

- AAF®
- Aercology®
- Airflow® Systems
- Clemco®
- Environmental Systems Designs
- Farr
- Geoff
- MAC
- Micro Air®
- Nordson
- Pneumafil
- Robovent®
- Steelcraft®
- Trion®
- UAS®
- Wheelabrator
- + Many others



Call 1800 345 837 for live support



Leading Technology

- Over 1,000 engineers and scientists worldwide
- Broad range of innovative collectors and filters
- 100s of filter media formulations

Experience and Service

- Technical expertise and support
- Ready-to-ship filters and parts within 24 hours
- 1,000,000+ dust, fume and mist collectors installed

Global Support

- Facilities in 37 countries
- 40 manufacturing plants and 14 distribution centers

Call Donaldson to get cleaner air today:

1800 345 837

www.donaldsonfilters.com.au

